

QUILT NORTH WALKER CADDY PATTERN



QUILT NORTH WALKER CADDY PATTERN

Finished size is 12" wide by 7.5 with 5" to 6" adjustable handles.

Cutting Instructions (already done for you):

Body	Outside/lining	13" x 16"	- cut 1 for each
	Fusible stabilizer	12.5" x 15.5"	- cut 1
Handles	Fabric	4" x 14.5"	- cut 2
Velcro	Fastener	.75" x 3"	- cut 2

Construction Directions:

1. Iron fusible side of stabilizer to wrong side of the outside fabric.
2. For each strip, at one end, fold up $\frac{1}{2}$ " to inside and press. Press the handle strips lengthwise (wrong sides together) in half. Press each long side to the middle crease. Following the crease lines, fold the handle inwards to a 1" width and press again. Topstitch $\frac{1}{8}$ " around all sides.
3. On the right side of the body pinch a crease halfway on one of the short sides.
4. Measure 2" on either side of the crease, make a small dot with a pencil. (See Diagram 1)
5. Lay the unfinished ² end of the handles along this edge. The handles will lay on the body of the fabric on the outsides of the pencil dots. Pin at top. Lay the right side of the lining face down. You now have a "handle" sandwich.

6. Pin and stitch 1/4" around all sides, leaving an opening at the opposite end of the handle side about the width of your hand. Backstitch at your starting and stopping points. Trim all corners to diminish the bulk.
7. Turn your caddy inside out. Press. Top stitch 1/4" on handle end and opposite end - making sure that you are closing the opening.
8. Sew 2 pieces of Velcro on the outside of the caddy where the handles are attached. On both handles sew Velcro on ends so they will stick to Velcro on the front of the caddy. (See Diagram 2)
9. Fold the 13" sides together and sew up these short sides.

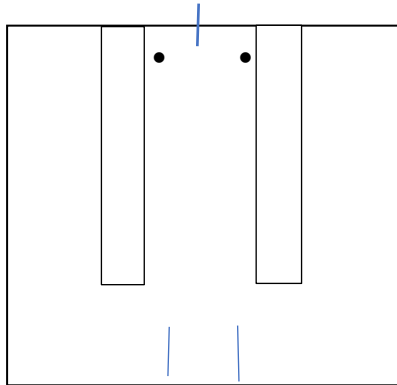
If you have any questions/concerns, please email us at the
CONTACT US at

www.quiltnorth.org

You can also go to the above guild website. Select **COMFORT QUILTS** and scroll down to **WALKER CADDY INSTRUCTIONS** for complete with step-by-step instructions and pictures.

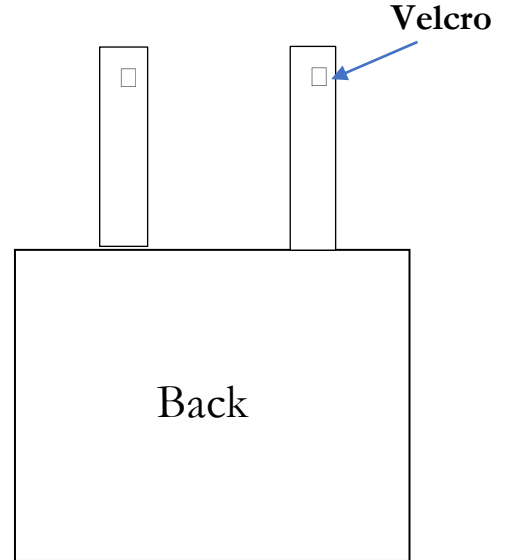
Please return the finished kit in the bag and with the instructions included for the next in person meeting.

Diagram 1



Opening

Diagram 2

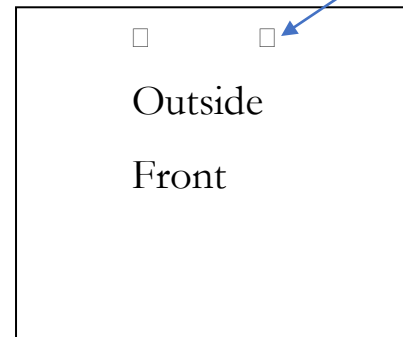


Velcro

Back

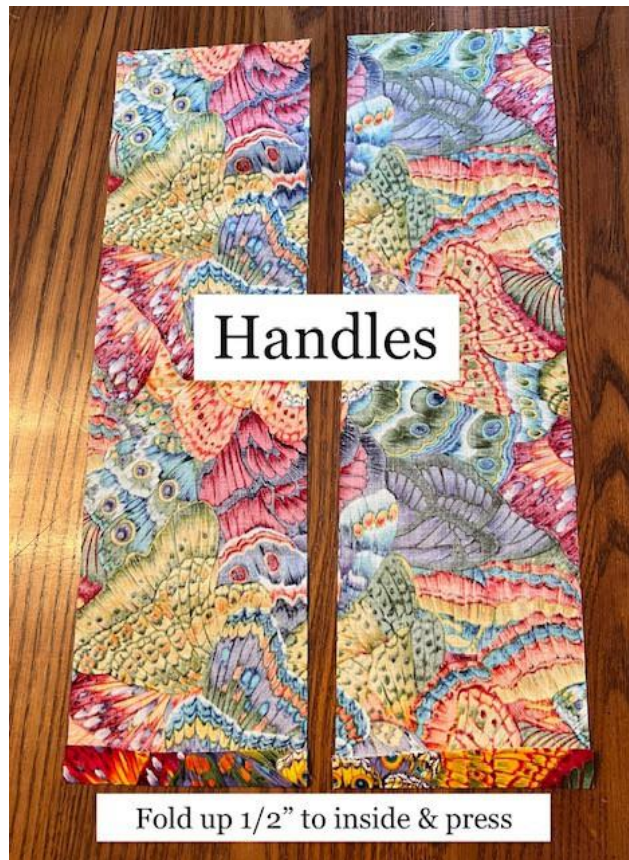


Velcro

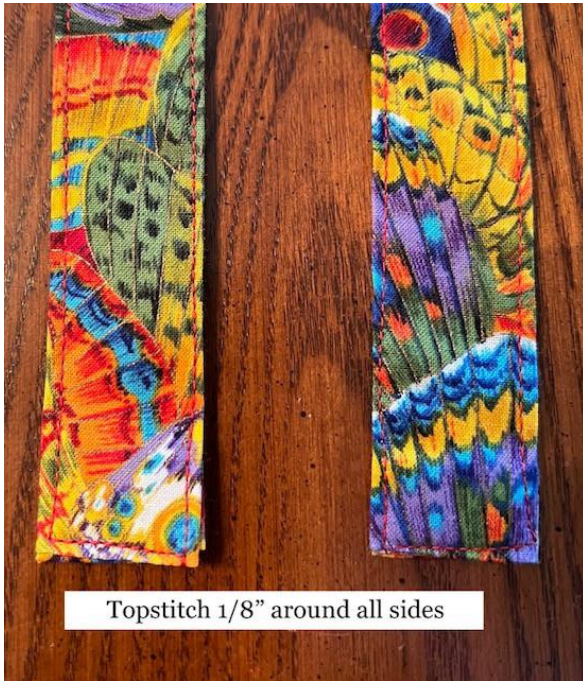


Outside

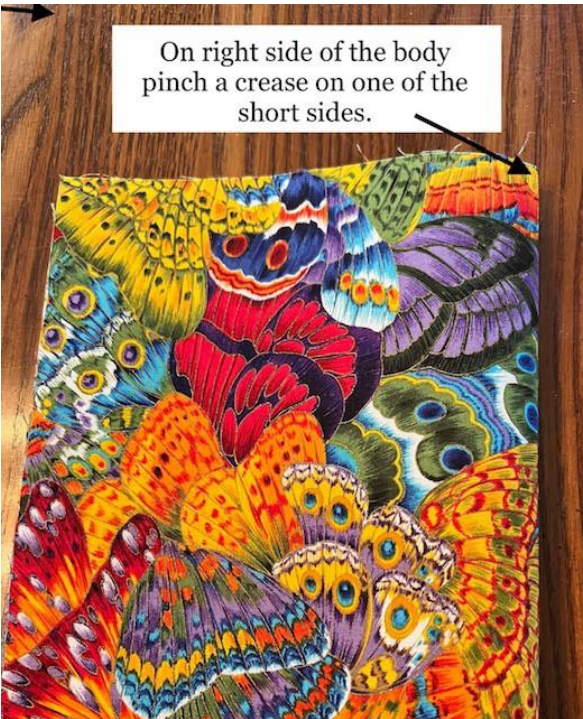
Front



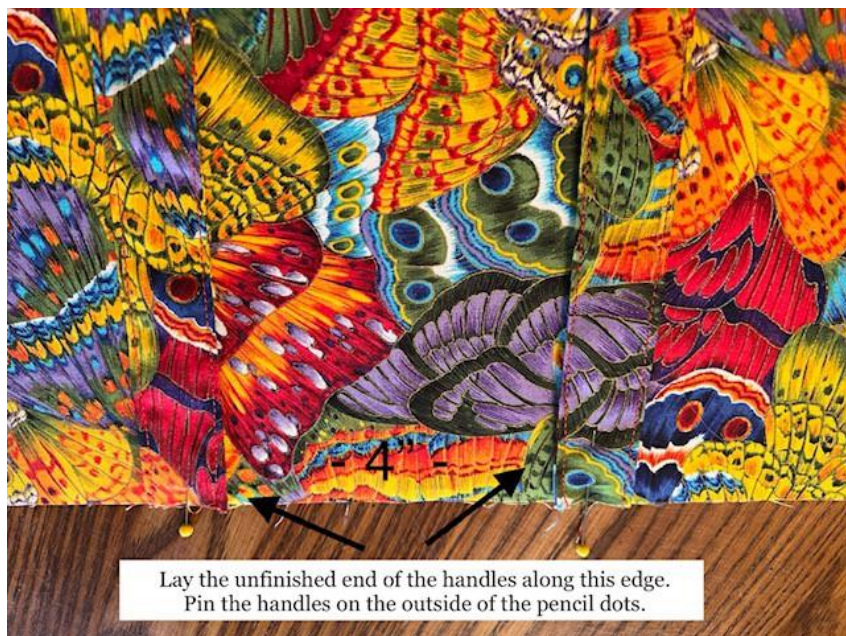




Topstitch 1/8" around all sides



On right side of the body
pinch a crease on one of the
short sides.





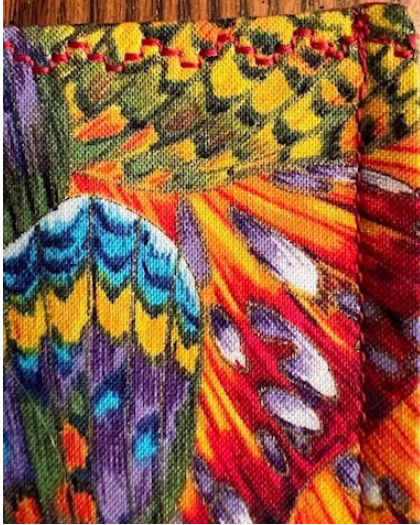


Stitch the fuzzy side of the Velcro to the inside of the handle.

Stitch the loop side of the Velcro on the outside of the caddy.

Finished handle closure should look like this.

Topstitch 1/4" or use a decorative stitch
on handle end and opposite end -
making sure you are closing the opening.



Fold in half &
stitch sides with
a 1/4" seam.

